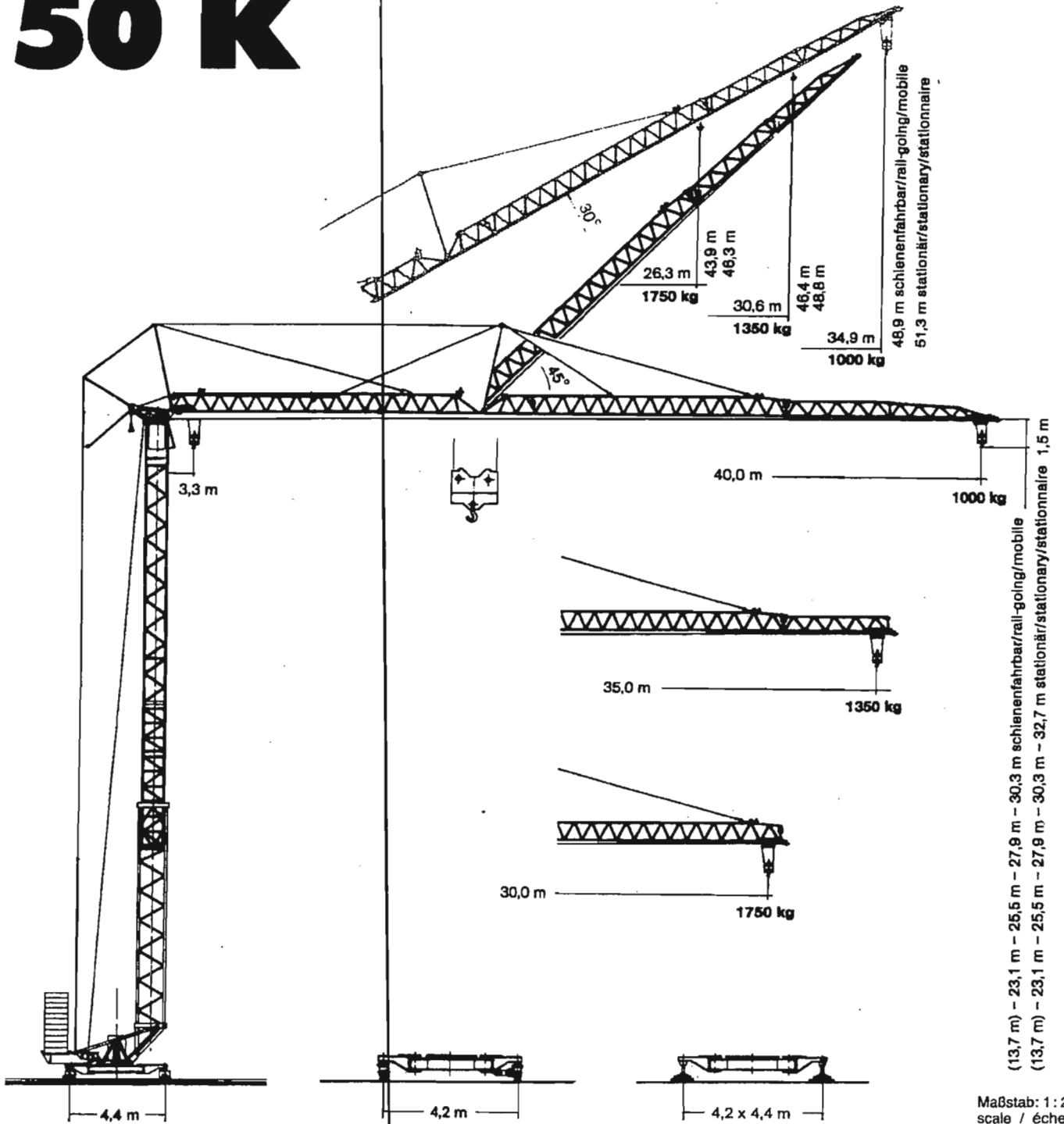


**Tower Crane  
Grue à tour**

# Turmdrehkran 50 K



(13,7 m) - 23,1 m - 25,5 m - 27,9 m - 30,3 m schienenfahbar/rail-going/mobile  
(13,7 m) - 23,1 m - 25,5 m - 27,9 m - 30,3 m - 32,7 m stationär/stationary/stationnaire

Maßstab: 1 : 270  
scale / échelle

# LIEBHERR

# Ausladung und Tragfähigkeit

## Radius and capacity / Portée et charge

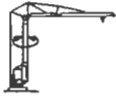
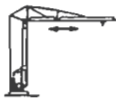


Auslegerlänge Length of jib Longueur de flèche m	max. kg m/kg	m/kg																				
		20,0	21,0	22,0	23,0	24,0	25,0	26,0	27,0	28,0	29,0	30,0	31,0	32,0	33,0	34,0	35,0	36,0	37,0	38,0	39,0	40,0
40,0	3,3-20,8 2300	2300	2270	2140	2030	1920	1830	1740	1660	1580	1520	1450	1390	1340	1290	1240	1190	1150	1100	1070	1035	1000
35,0	3,3-22,8 2300	2300	2300	2300	2270	2160	2050	1960	1870	1790	1710	1650	1570	1510	1460	1400	1350					
30,0	3,3-24,0 2300	2300	2300	2300	2300	2300	2190	2090	1990	1900	1830	1750										

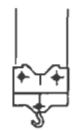
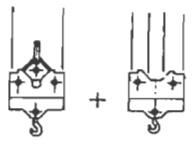
m	max. kg m/kg	m/kg	m/kg																				
			13,0	14,0	15,0	16,0	17,0	18,0	19,0	20,0	21,0	22,0	23,0	24,0	26,0	28,0	30,0	32,0	34,0	35,0	36,0	38,0	40,0
40,0	3,3-20,8 2250	-11,9 4500	4050	3880	3370	3100	2870	2670	2500	2340	2200	2070	1960	1860	1680	1530	1390	1280	1180	1140	1100	1020	950
35,0	3,3-22,8 2250	-13,1 4500	4500	4130	3780	3490	3230	3010	2810	2640	2480	2340	2220	2100	1900	1730	1590	1460	1350	1300			
30,0	3,3-23,8 2250	-13,9 4500	4500	4400	4030	3720	3450	3210	3000	2820	2650	2500	2370	2250	2030	1850	1700						

m	max. kg m/kg	m/kg	Auslegersteilstellung 30° Elevated jib 30° Flèche inclinée 30° m/kg																				
			16,0	17,0	18,0	19,0	20,0	21,0	22,0	23,0	24,0	25,0	26,3	27,0	28,0	29,0	30,0	30,6	31,0	32,0	33,0	34,0	34,9
40,0	3,1-18,3 2300		2300	2300	2300	2190	2050	1930	1820	1720	1630	1550	1450	1400	1340	1280	1220	1190	1170	1120	1080	1040	1000
35,0	3,1-20,0 2300		2300	2300	2300	2300	2300	2170	2050	1940	1840	1750	1640	1580	1510	1450	1390	1350					
30,0	3,1-21,1 2300		2300	2300	2300	2300	2300	2300	2190	2070	1960	1860	1750										

# Geschwindigkeiten

## Speeds / Vitesses

	U/min 0 - 0,8 sl./min tr./min	3,0 kW
	20,0 / 40,0 m/min	1,5 / 2,2 kW
	25,0 m/min	2 x 1,5 kW
	0-45° ca. 60 sec.	3,0 kW

Hubwerk Hoist unit Mécanisme de levage	Stufe Step Cran	kg	m/min
15,0 kW 	1	2300	6,0
	2	2300	27,0
	3	1600	50,0
	1	2250 4500	6,0 3,0
	2	2250 4500	27,0 13,5
	3	1600 3200	50,0 25,0

Leitungsquerschnitt bei 380 V  
Cross section of cable  
Section de câble à

Betriebsspannung 380 V  
Operating voltage  
Tension de service

Technische Kenngröße nach BGL  
Technical nominal size according to the construction machinery list (BGL)  
Grandeur caractéristique suivant le barème d'emploi des appareils (BGL)

bis 99,0 m up to  
jusqu'à  
Frequenz 50 Hz  
Frequency  
Fréquence

4 x 16 mm<sup>2</sup>

Gesamtmotorenleistung 26,2 kW

Total motor output  
Puissance totale des moteurs

Gesamtanschlusswert (bei Gleichzeitigkeitsfaktor von 0,8) 40,0 kVA  
Total power requirement (with a simultaneity factor of 0,8)  
Puissance totale requise (avec un facteur de simultanéité de 0,8)

