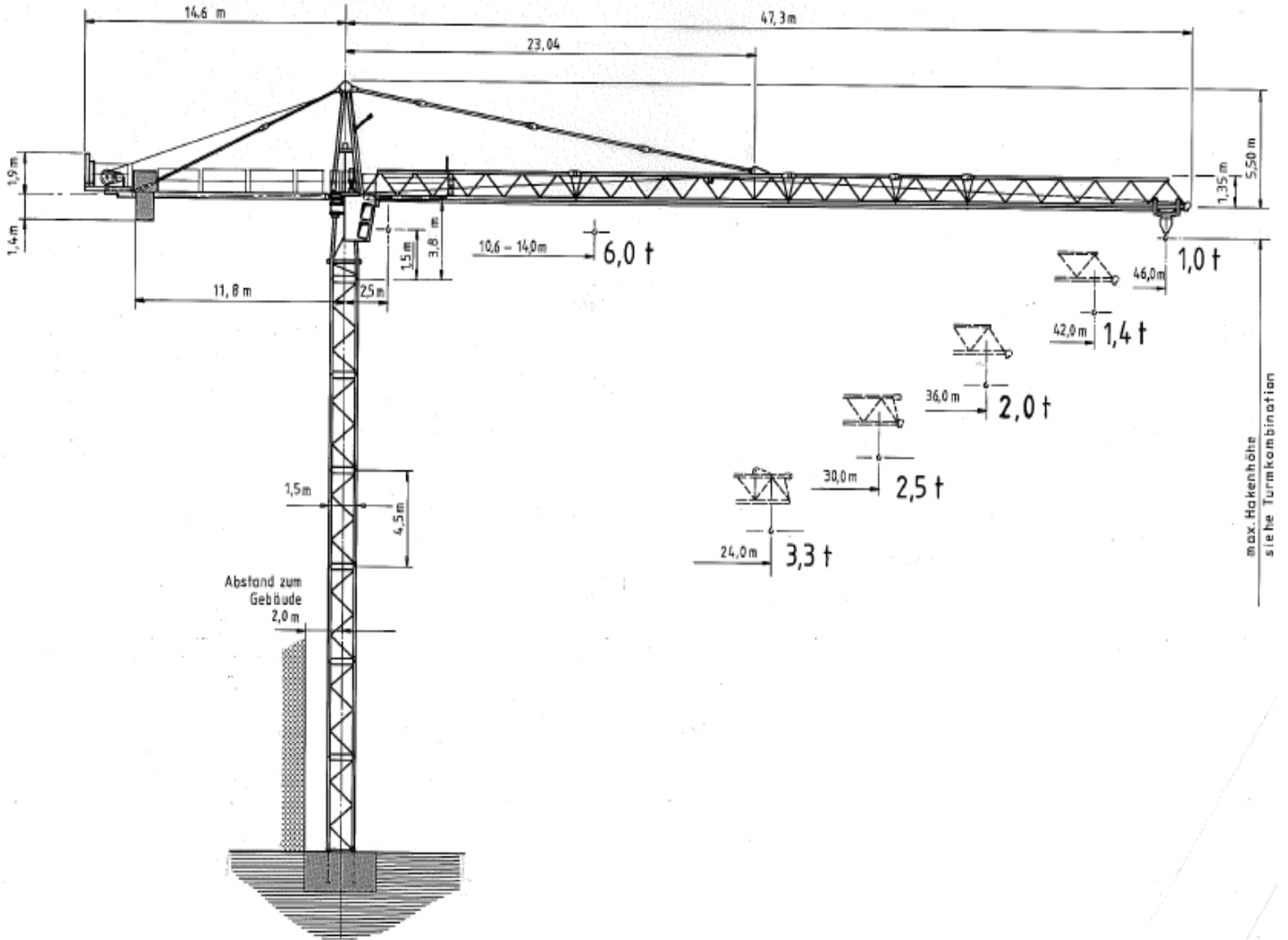






# WOLFF WK 71 SL



Anschluss / câble d'alimentation: 4 x 16<sup>2</sup>  
 Absicherung / fusible: 63 A  
 Anlaufstrom / courant de pointe maxi: 90 A

Ausladung / portée (m)		20	24	26	30	36	42	46	Tragfähigkeit (t) force de levage (t)	
Auslegerlänge (m) fleche (m)	46	2.5 - 10.6	3.0	2.4	2.2	1.8	1.4	1.1		1.0
	42	2.5 - 12.3	3.5	2.8	2.6	2.2	1.7	1.4		
	36	2.5 - 13.6	3.9	3.1	2.9	2.4	2.0			
	30	2.5 - 13.9	4.0	3.2	3.0	2.5				
	24	2.5 - 14.0	4.1	3.3						
		 6.0								

 Motor (kW) m/min.	22	 Motor (kW) m/min.	2.4	 Motor (kW) r.p.m.	4
	1.6-35/65/105		20/40		0.85



Kaufmann Kranservice GmbH  
 Rütisbergstrasse 8  
 8156 Oberhasli  
 Tel. 043 411 08 30  
 Fax 043 411 08 31  
 info@krankaufmann.ch  
 www.turmkrane.ch