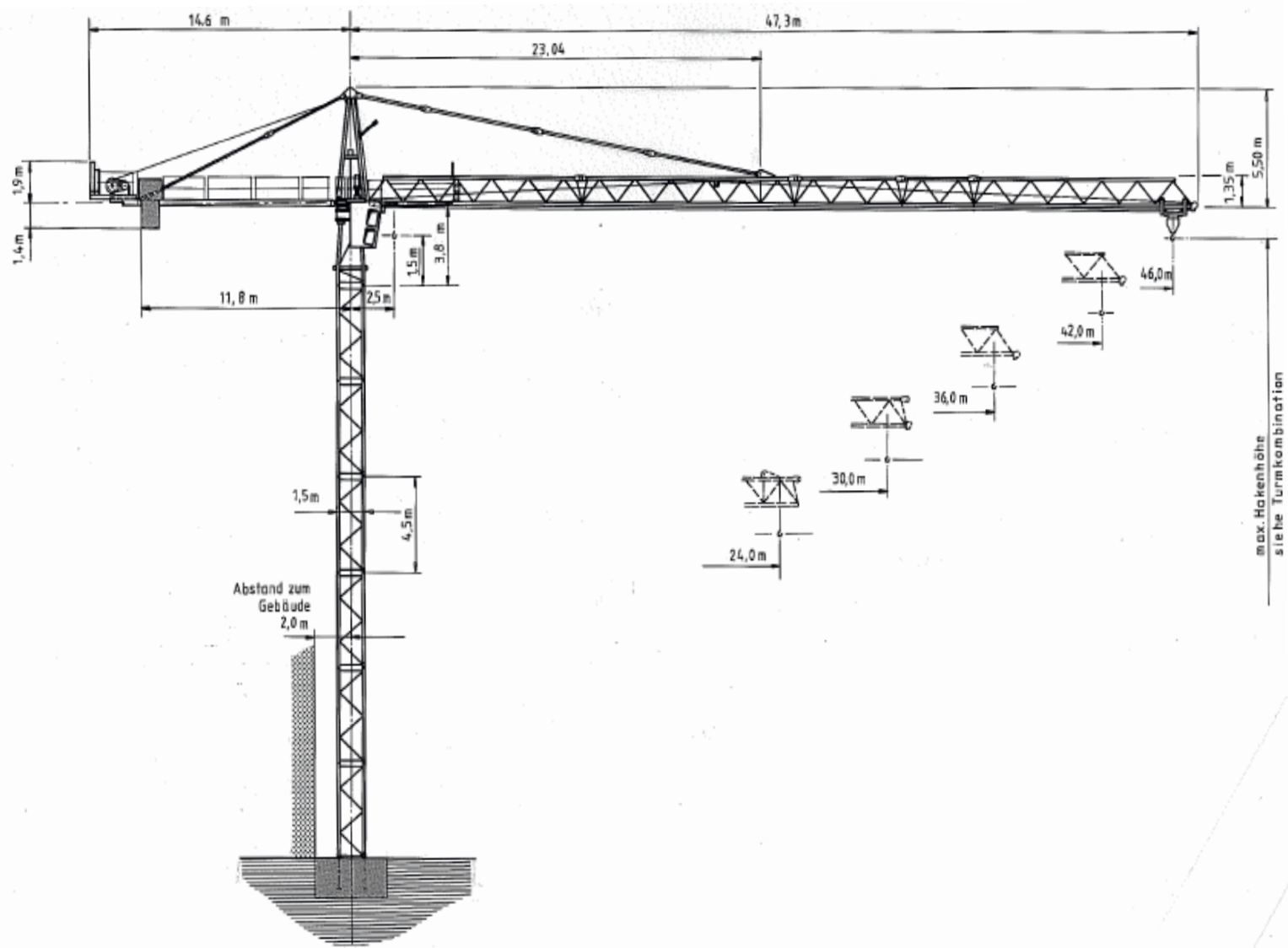






WOLFF WK 71 FL



Anschluss / câble d'alimentation: 4 x 16[□]
 Absicherung / fusible: 40 A
 Anlaufstrom / courant de pointe maxi: 54 A

Ausladung / portée (m)		20	24	26	30	36	42	46	 Tragfähigkeit (t) force de levage (t)	
Auslegerlänge (m) fleche (m)	46	2.5 - 11.5	3.25	2.6	2.4	2.0	1.6	1.28		1.13
	42	2.5 - 13.2	3.8	3.0	2.8	2.37	1.9	1.55		
	36	2.5 - 14.8	4.3	3.5	3.2	2.7	2.17			
	30	2.5 - 15.2	4.45	3.6	3.3	2.8				
	24	2.5 - 15.3	4.5	3.65						

 Motor Fu (kW) m/min. 22 1.6 - 105	 Motor Fu (kW) m/min. 4.0 10 - 80	 Motor (kW) r.p.m. 4 0.85
---	--	--



Kaufmann Kranservice GmbH
 Rütisbergstrasse 8
 8156 Oberhasli
 Tel. 043 411 08 30
 Fax 043 411 08 31
 info@krankaufmann.ch
 www.turmkrane.ch