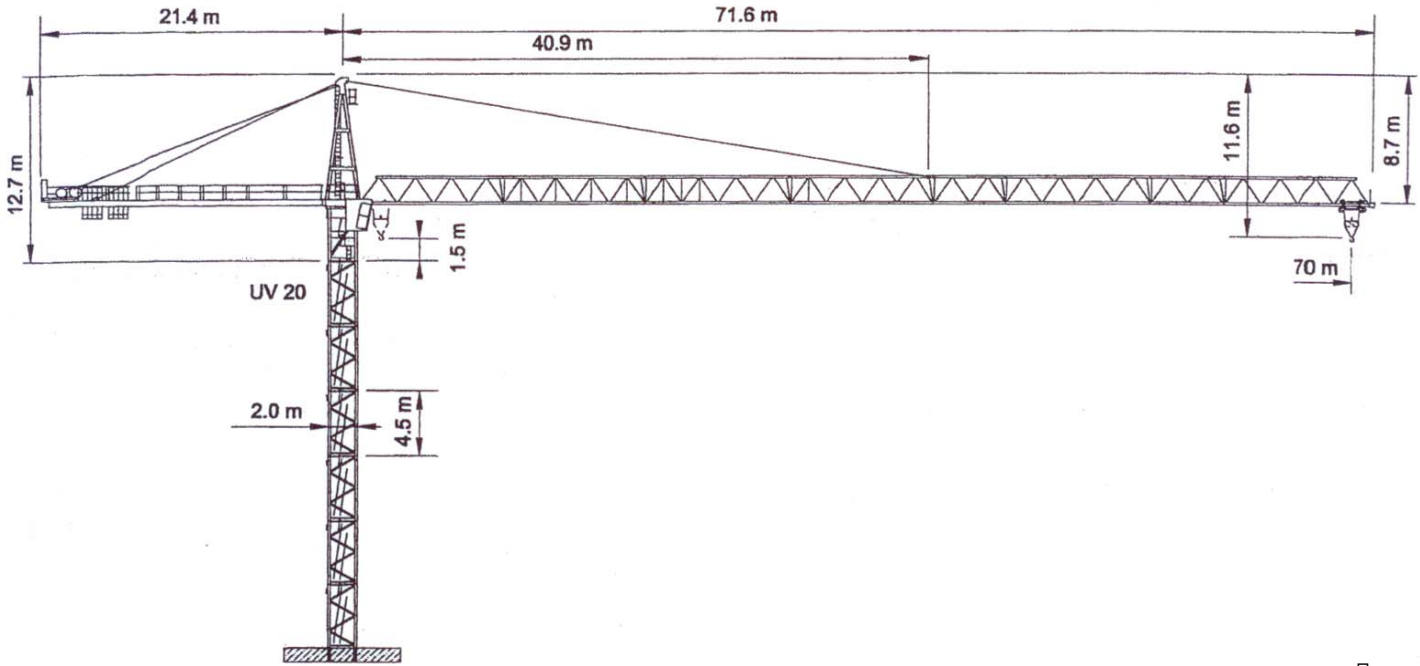


WOLFF WK 7031 SL-6/12



Anschluss / câble d'alimentation: 4 x 50[□]
 Absicherung / fusible: 160 A
 Anlaufstrom / courant de pointe maxi: 250 A

Ausladung / portée (m)		30	35	40	45	50	55	60	65	70		
Auslegerlänge (m) flèche (m)	70	2.6 – 21.3	8.0	6.7	5.7	4.9	4.3	3.8	3.4	3.0	2.7	Tragfähigkeit (t) force de levage (t)
	65	2.6 – 22.3	8.5	7.1	6.0	5.2	4.5	4.0	3.6	3.2		
	60	2.6 – 22.9	8.7	7.3	6.2	5.4	4.7	4.1	3.7			
	55	2.6 – 23.9	9.2	7.7	6.5	5.7	5.0	4.4				
	50	2.6 – 24.7	9.6	8.0	6.8	5.9	5.2					
	45	2.6 – 25.7	10.0	8.4	7.1	6.2						
	40	2.6 – 25.8	10.1	8.4	7.2							
	35	2.6 – 25.9	10.2	8.5								
	30	2.9 – 26.7	10.5									



Ausladung / portée (m)		30	35	40	45	50	55	60	65	70		
Auslegerlänge (m) flèche (m)	70	2.6 – 38.8	6.0	6.0	5.8	5.0	4.4	3.9	3.5	3.1	2.8	Tragfähigkeit (t) force de levage (t)
	65	2.6 – 40.6	6.0	6.0	6.0	5.3	4.6	4.1	3.7	3.3		
	60	2.6 – 41.7	6.0	6.0	6.0	5.5	4.8	4.3	3.8			
	55	2.6 – 43.6	6.0	6.0	6.0	5.8	5.1	4.5				
	50	2.6 – 45.2	6.0	6.0	6.0	6.0	5.3					
	45	2.6 – 45.0	6.0	6.0	6.0	6.0						
	40	2.6 – 40.0	6.0	6.0	6.0							
	35	2.6 – 35.0	6.0	6.0								
	30	2.9 – 30.0	6.0									



	Motor (kW)	75		Motor (kW)	7.5		Motor (kW)	2 x 5
	m/min.	28/80/140		m/min.	0...80		r.p.m.	0.75



Kaufmann Kranservice GmbH
 Rütisbergstr. 8, CH-8156 Oberhasli / ZH
 Tel. 043 411 08 30 Fax 043 411 08 31
 www.krankaufmann.ch / info@krankaufmann.ch