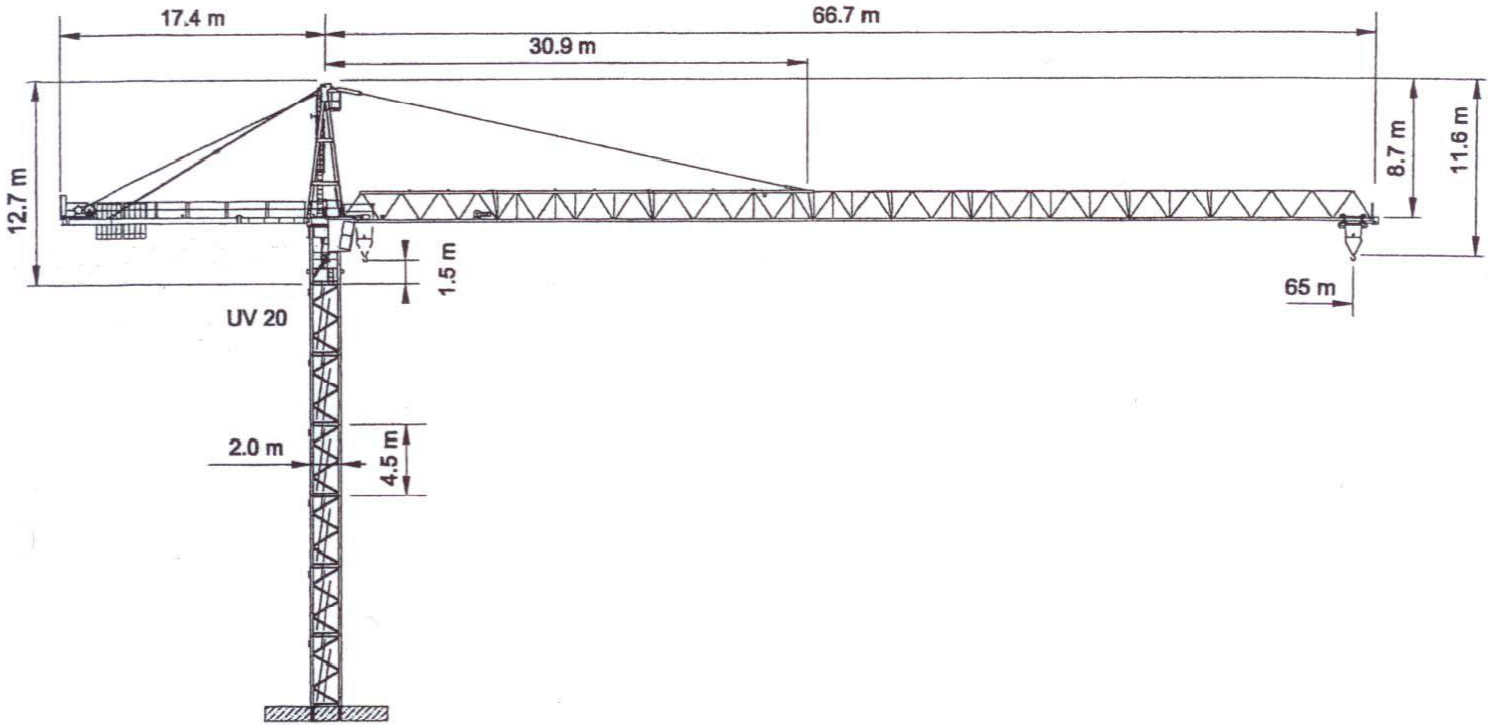


WOLFF WK 6522 SL-6/12



Anschluss / câble d'alimentation: 4 x 35[□]
 Absicherung / fusible: 100 A
 Anlaufstrom / courant de pointe maxi: 165 A

Ausladung / portée (m)		25	30	35	40	45	50	55	60	65		
Auslegerlänge (m) flèche (m)	65	2.6 – 15.5	6.8	5.4	4.4	3.7	3.2	2.7	2.4	2.1	1.8	Tragfähigkeit (t) force de levage (t)
	60	2.6 – 16.6	7.4	5.9	4.9	4.1	3.5	3.0	2.6	2.3		
	55	2.6 – 17.6	7.9	6.4	5.3	4.4	3.8	3.3	2.9			
	50	2.6 – 18.7	8.5	6.8	5.7	4.8	4.1	3.6				
	45	2.6 – 20.2	9.4	7.5	6.3	5.3	4.6					
	40	2.6 – 21.0	9.8	7.9	6.6	5.6						
	35	2.6 – 21.4	10.0	8.1	6.7							
	30	2.9 – 21.7	10.2	8.2								



Ausladung / portée (m)		25	30	35	40	45	50	55	60	65		
Auslegerlänge (m) flèche (m)	65	2.6 – 28.0	6.0	5.5	4.5	3.8	3.3	2.8	2.5	2.2	1.9	Tragfähigkeit (t) force de levage (t)
	60	2.6 – 30.0	6.0	6.0	5.0	4.2	3.6	3.1	2.7	2.4		
	55	2.6 – 31.9	6.0	6.0	5.4	4.5	3.9	3.4	3.0			
	50	2.6 – 33.9	6.0	6.0	5.8	4.9	4.2	3.7				
	45	2.6 – 36.8	6.0	6.0	6.0	5.4	4.7					
	40	2.6 – 38.9	6.0	6.0	6.0	5.7						
	35	2.6 – 35.0	6.0	6.0	6.0							
	30	2.9 – 30.0	6.0	6.0								



Motor (kW) m/min.	45	Motor (kW) m/min.	7.5	Motor (kW) r.p.m.	2 x 5
	1.6-35/63/100		1...80		0.75



Kaufmann Kranservice GmbH
 Rütisbergstrasse 8
 8156 Oberhasli
 Tel. 043 411 08 30
 Fax 043 411 08 31
 info@krankaufmann.ch
 www.turmkrane.ch