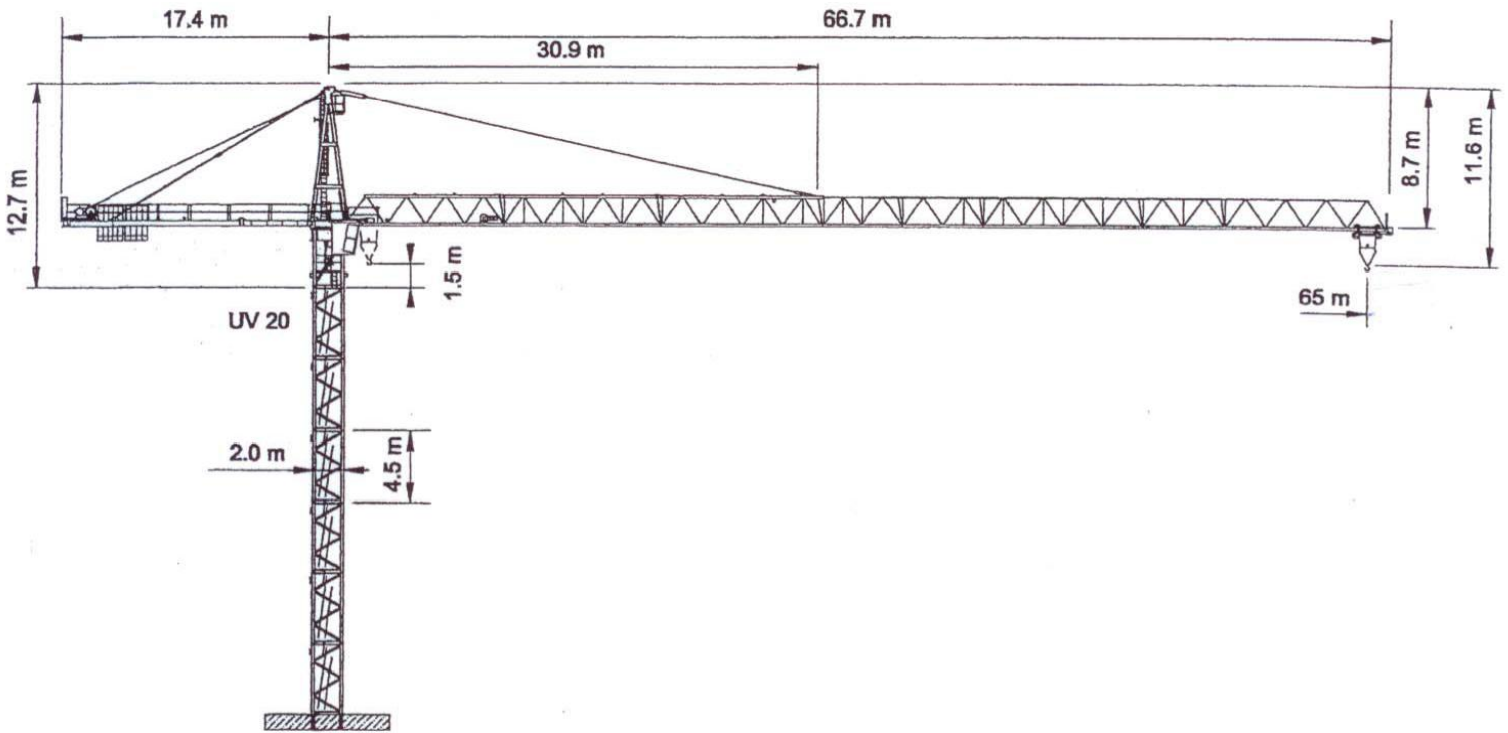


WOLFF WK 6522 SL-6



Anschluss / câble d'alimentation: 4 x 35[□]
 Absicherung / fusible: 100 A
 Anlaufstrom / courant de pointe maxi: 165 A

Ausladung / portée (m)		25	30	35	40	45	50	55	60	65		
Auslegerlänge (m) flèche (m)	65	2.6 – 28.2	6.2	5.7	4.8	4.1	3.5	3.1	2.7	2.4	2.2	Tragfähigkeit (t) force de levage (t)
	60	2.6 – 30.3	6.2	6.2	5.2	4.5	3.9	3.4	3.0	2.7		
	55	2.6 – 32.5	6.2	6.2	5.7	4.8	4.2	3.7	3.3			
	50	2.6 – 34.5	6.2	6.2	6.1	5.2	4.5	4.0				
	45	2.6 – 37.4	6.2	6.2	6.2	5.7	5.0					
	40	2.6 – 38.9	6.2	6.2	6.2	6.0						
	35	2.6 – 35.0	6.2	6.2	6.2							
	30	2.6 – 30.0	6.2	6.2								

	Motor (kW) m/min.	45 1.6-35/63/100		Motor (kW) m/min.	7.5 1...80		Motor (kW) r.p.m.	2 x 5 0.75
--	----------------------	---------------------	--	----------------------	---------------	--	----------------------	---------------



Kaufmann Kranservice GmbH
 Rütisbergstrasse 8
 8156 Oberhasli
 Tel. 043 411 08 30
 Fax 043 411 08 31
 info@krankaufmann.ch
 www.turmkrane.ch