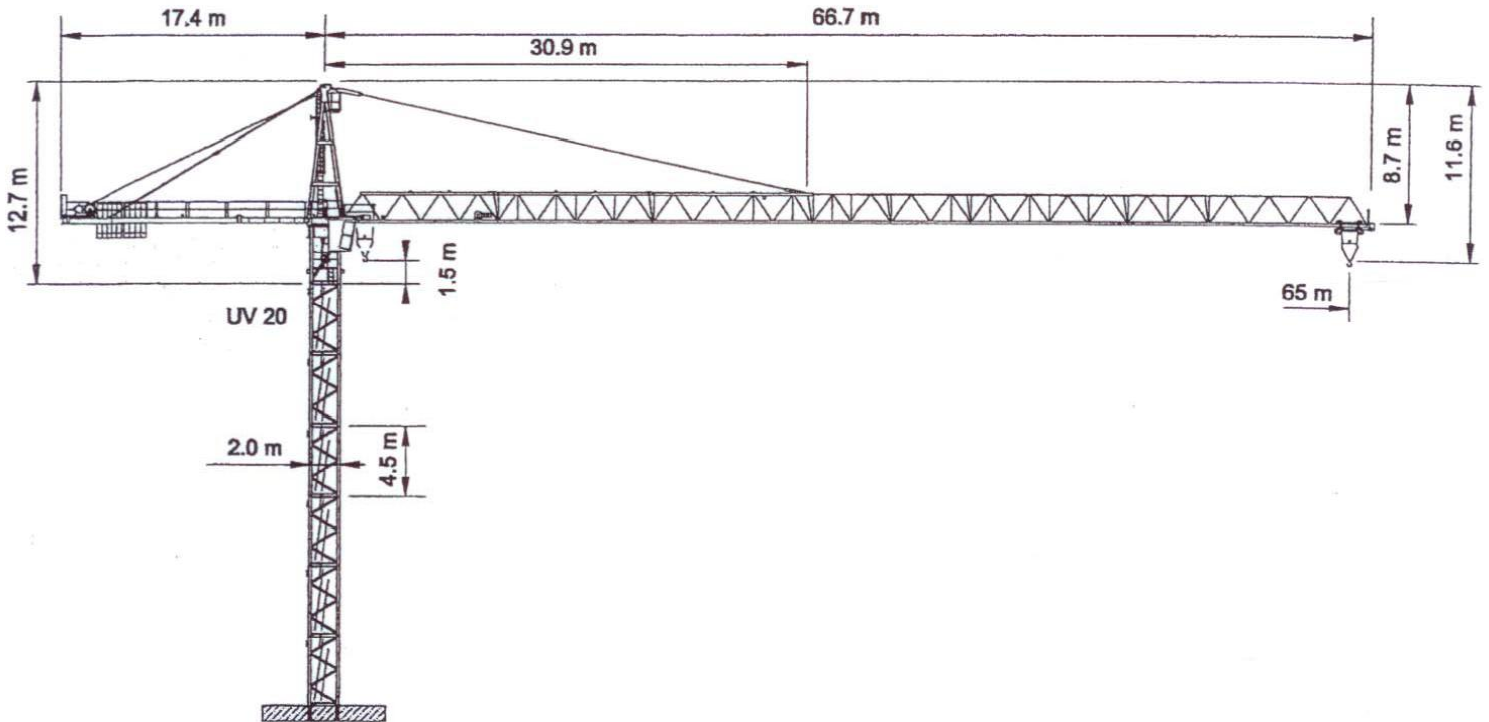


WOLFF WK 6522 FL-6/12 CCplus



Anschluss / câble d'alimentation: 4 x 25[□]
 Absicherung / fusible: 80 A
 Anlaufstrom / courant de pointe maxi: 90 A

Ausladung / portée (m)		25	30	35	40	45	50	55	60	65	Tragfähigkeit (t) force de levage (t)	
Auslegerlänge (m) flèche (m)	65	2.6 – 16.1	7.3	5.9	4.9	4.1	3.5	3.1	2.7	2.4		2.1
	60	2.6 – 17.4	8.0	6.5	5.4	4.6	3.9	3.4	3.0	2.7		
	55	2.6 – 18.7	8.7	7.0	5.9	5.0	4.3	3.8	3.3			
	50	2.6 – 20.1	9.4	7.6	6.4	5.4	4.7	4.1				
	45	2.6 – 21.1	10.0	8.1	6.8	5.8	5.0					
	40	2.6 – 22.1	10.5	8.5	7.1	6.1						
	35	2.6 – 22.6	10.7	8.7	7.3							
	30	2.6 – 23.1	11.0	9.0								

Ausladung / portée (m)		25	30	35	40	45	50	55	60	65	Tragfähigkeit (t) force de levage (t)	
Auslegerlänge (m) flèche (m)	65	2.6 – 31.2	6.0	6.0	5.2	4.4	3.8	3.3	2.9	2.6		2.3
	60	2.6 – 33.0	6.0	6.0	5.6	4.8	4.1	3.6	3.2	2.8		
	55	2.6 – 35.5	6.0	6.0	6.0	5.2	4.5	3.9	3.5			
	50	2.6 – 38.0	6.0	6.0	6.0	5.6	4.9	4.3				
	45	2.6 – 41.6	6.0	6.0	6.0	6.0	5.5					
	40	2.6 – 40.0	6.0	6.0	6.0	6.0						
	35	2.6 – 35.0	6.0	6.0	6.0							
	30	2.6 – 30.0	6.0	6.0								

	Motor (kW) m/min.	45 1-140		Motor (kW) m/min.	7.5 1-100		Motor (kW) r.p.m.	2 x 5 0.75
--	----------------------	-------------	--	----------------------	--------------	--	----------------------	---------------