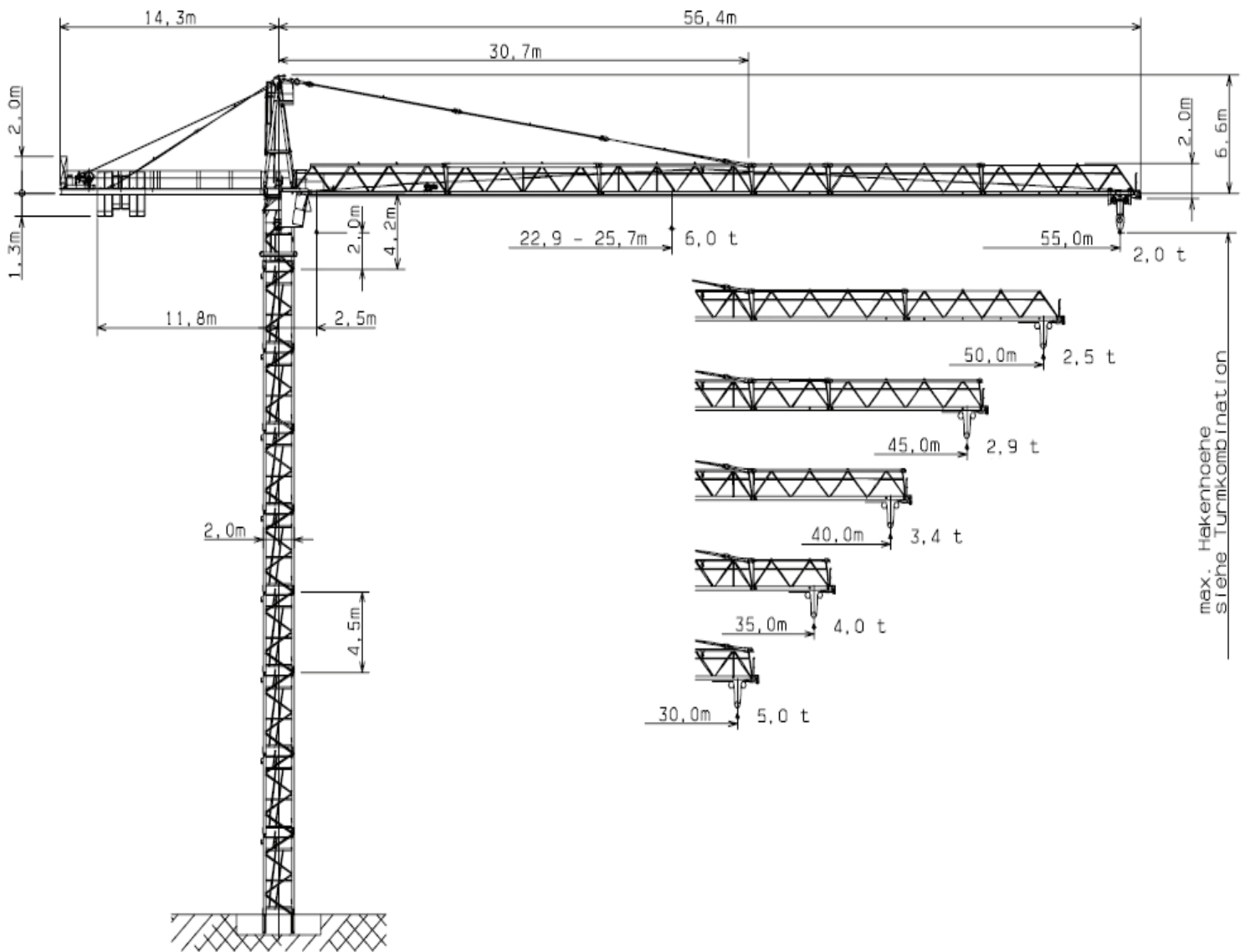


WOLFF WK 5520 SL



Anschluss / câble d'alimentation: 4 x 35[□]
 Absicherung / fusible: 100 A
 Anlaufstrom / courant de pointe maxi: 160 A

Ausladung / portée (m)		25	30	35	40	45	50	55	Tragfähigkeit (t) force de levage (t)	
Auslegerlänge (m) fleche (m)	55	2.5 - 22.9	5.4	4.4	3.6	3.1	2.6	2.3		2.0
	50	2.5 - 24.2	5.8	4.6	3.9	3.3	2.8	2.5		
	45	2.5 - 24.4	5.8	4.7	3.9	3.3	2.9			
	40	2.5 - 24.6	5.9	4.8	4.0	3.4				
	35	2.5 - 24.9	5.9	4.8	4.0					
	30	2.5 - 25.7	6.0	5.0						

	Motor (kW) m/min.	45 1.6-35/63/100		Motor (kW) m/min.	4 1...80		Motor (kW) r.p.m.	7.5 0.8
--	----------------------	---------------------	--	----------------------	-------------	--	----------------------	------------