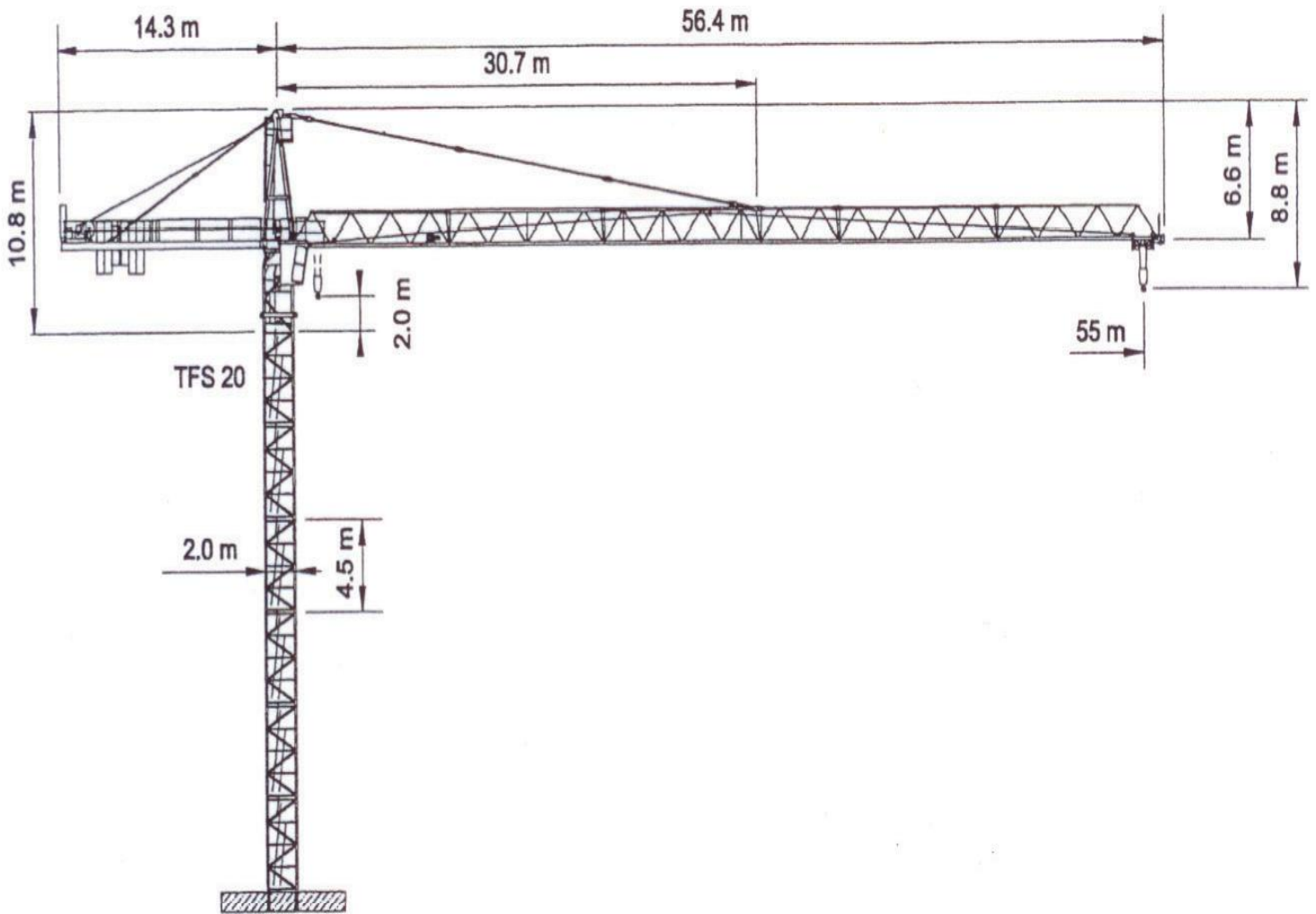


WOLFF WK 5520 FL 6 CCplus



Anschluss / câble d'alimentation: 4 x 16[□]
 Absicherung / fusible: 80 A
 Anlaufstrom / courant de pointe maxi: 75 A

Ausladung / portée (m)		25	30	35	40	45	50	55		
Auslegerlänge (m) fleche (m)	55	2.5 – 25.3	6.0	4.9	4.1	3.5	3.0	2.7	2.4	Tragfähigkeit (t) force de levage (t)
	50	2.5 – 26.5	6.0	5.2	4.4	3.7	3.2	2.8		
	45	2.5 – 26.6	6.0	5.2	4.4	3.7	3.2			
	40	2.5 – 26.7	6.0	5.3	4.4	3.8				
	35	2.5 – 26.8	6.0	5.3	4.4					
	30	2.5 – 27.6	6.0	5.4						



6.0

	Motor (kW) m/min.	37 0-140		Motor (kW) m/min.	4 1...80		Motor (kW) r.p.m.	7.5 0.8
--	----------------------	-------------	--	----------------------	-------------	--	----------------------	------------



Kaufmann Kranservice GmbH
 Rütisbergstrasse 8
 8156 Oberhasli
 Tel. 043 411 08 30
 Fax 043 411 08 31
 info@krankaufmann.ch
 www.turmkrane.ch