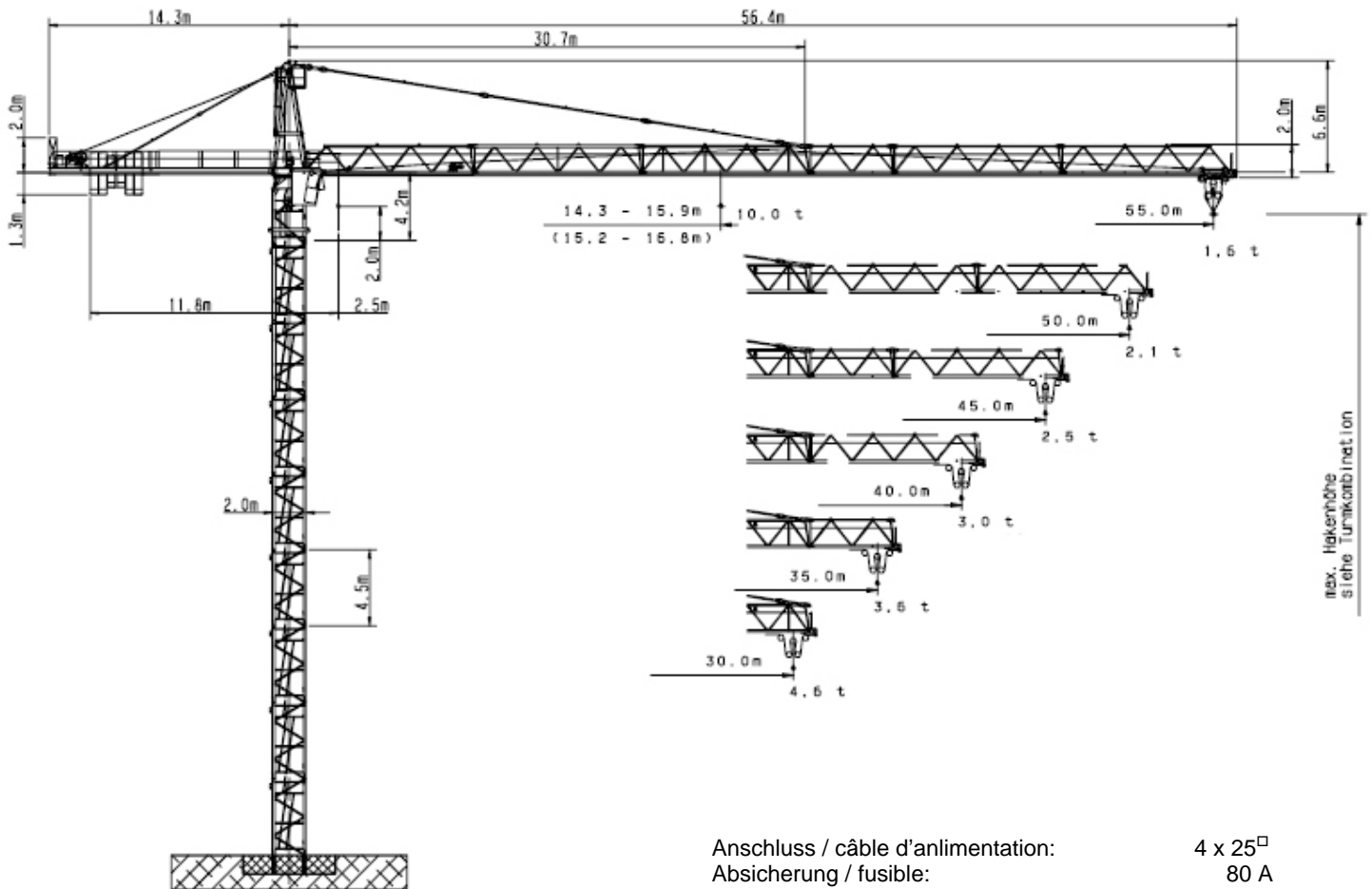


WOLFF WK 5520 FL 6/10



Anschluss / câble d'alimentation: 4 x 25[□]
 Absicherung / fusible: 80 A
 Anlaufstrom / courant de pointe maxi: 75 A

Ausladung / portée (m)		25	30	35	40	45	50	55	
Auslegerlänge (m) flèche (m)	55	2.5 - 22.0	5.1	4.1	3.3	2.8	2.3	2.0	Tragfähigkeit (t) force de levage (t)
	50	2.5 - 23.2	5.5	4.4	3.6	3.0	2.5	2.2	
	45	2.5 - 23.4	5.5	4.4	3.6	3.0	2.6		
	40	2.5 - 23.6	5.6	4.5	3.7	3.1			
	35	2.5 - 23.9	5.7	4.5	3.7				
	30	2.5 - 24.6	5.9	4.7					

Ausladung / portée (m)		25	30	35	40	45	50	55	
Auslegerlänge (m) flèche (m)	55	2.5 - 14.3	5.0	4.0	3.2	2.7	2.2	1.9	Tragfähigkeit (t) force de levage (t)
	50	2.5 - 15.0	5.4	4.3	3.5	2.9	2.4	2.1	
	45	2.5 - 15.1	5.4	4.3	3.5	2.9	2.5		
	40	2.5 - 15.3	5.5	4.4	3.6	3.0			
	35	2.5 - 15.4	5.6	4.4	3.6				
	30	2.5 - 15.9	5.8	4.6					

	Motor (kW)	37		Motor (kW)	4		Motor (kW)	7.5
	m/min.	0...140		m/min.	1...80		r.p.m.	0.8



Kaufmann Kranservice GmbH
 Rütisbergstr. 8, CH-8156 Oberhasli / ZH
 Tel. 043 411 08 30 Fax 043 411 08 31
 www.krankaufmann.ch / info@krankaufmann.ch