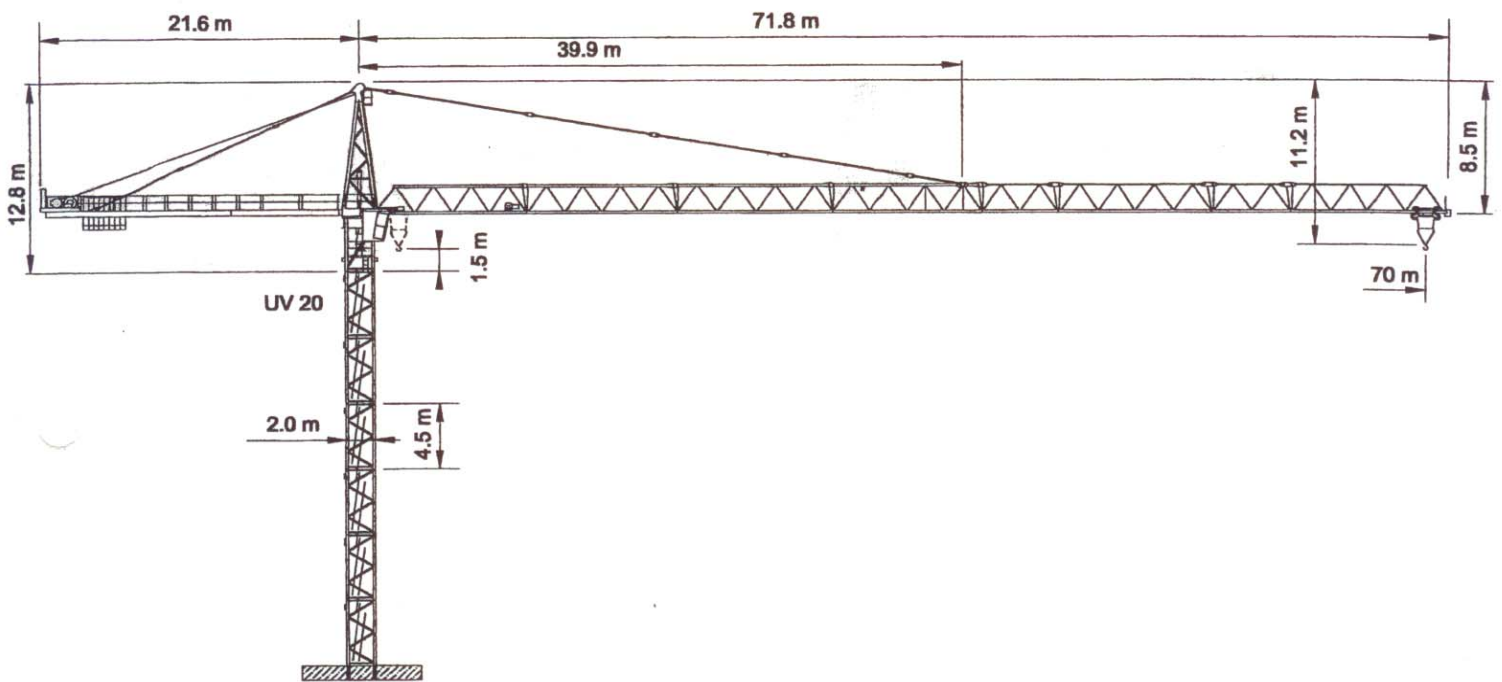


WOLFF WK 262 SL



Anschluss / câble d'alimentation: 4 x 50[□]
 Absicherung / fusible: 160 A
 Anlaufstrom / courant de pointe maxi: 250 A

Ausladung / portée (m)		30	35	40	45	50	55	60	65	70	Tragfähigkeit (t) force de levage (t)	
Auslegerlänge (m) fleche (m)	70	2.6 – 20.3	7.77	6.50	5.55	4.81	4.22	3.74	3.33	2.99		2.70
	65	2.6 – 21.3	8.22	6.88	5.89	5.11	4.49	3.98	3.56	3.20		
	60	2.6 – 22.0	8.50	7.13	6.10	5.30	4.66	4.14	3.70			
	55	2.6 – 23.1	8.98	7.54	6.46	5.62	4.95	4.40				
	50	2.6 – 24.0	9.40	7.90	6.77	5.90	5.20					
	45	2.6 – 25.1	9.85	8.28	7.11	6.20						
	40	2.6 – 25.3	9.97	8.38	7.20							
	35	2.6 – 25.6	10.10	8.50								
	30	2.9 – 26.6	10.50									

	Motor (kW) m/min.	75 28/./80/140		Motor (kW) m/min.	6 20/40/80		Motor (kW) r.p.m.	2 x 6.3 0.7
--	----------------------	-------------------	--	----------------------	---------------	--	----------------------	----------------



Kaufmann Kranservice GmbH
 Rütisbergstr. 8, CH-8156 Oberhasli / ZH
 Tel. 043 411 08 30 Fax 043 411 08 31
 www.krankaufmann.ch / info@krankaufmann.ch