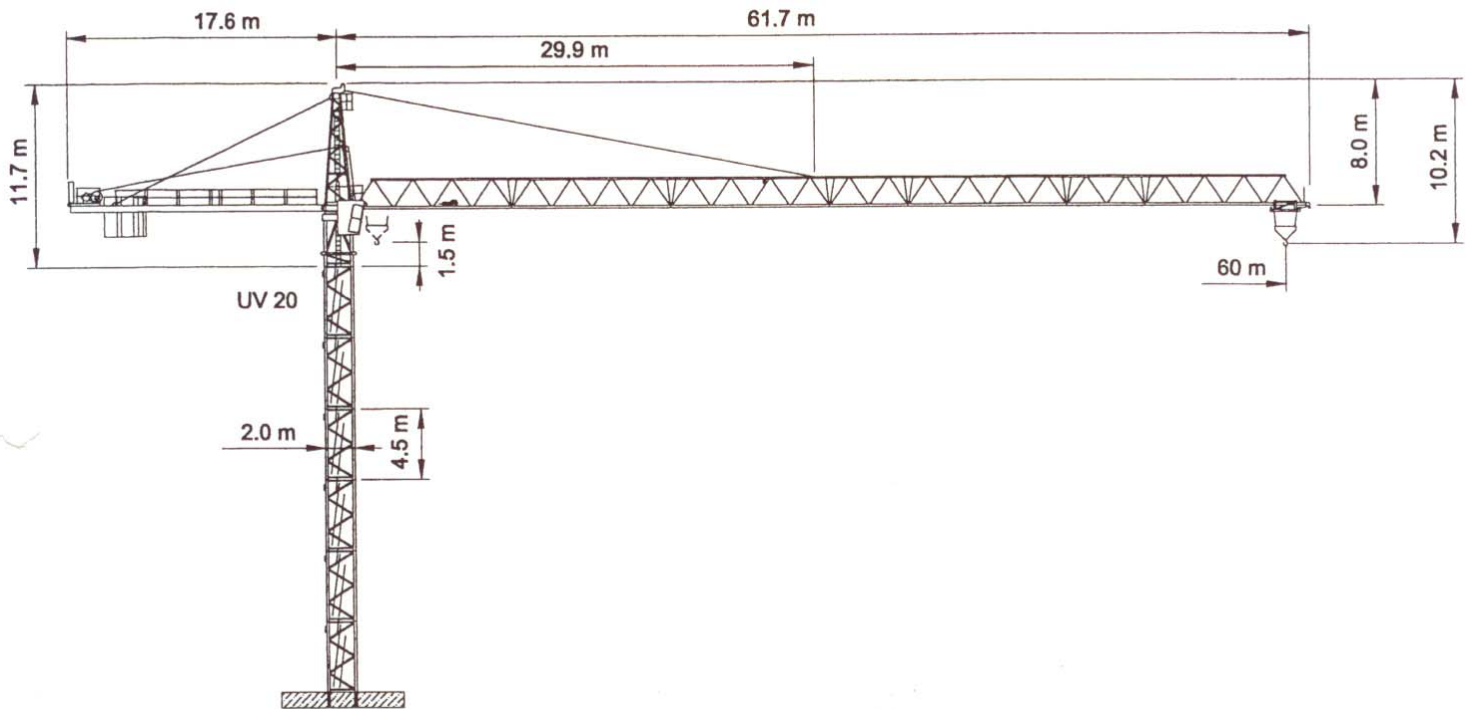


WOLFF WK 192 SL B



Anschluss / câble d'alimentation: 4 x 35[□]
 Absicherung / fusible: 100 A
 Anlaufstrom / courant de pointe maxi: 165 A

Ausladung / portée (m)		30	35	40	45	50	55	60	
Auslegerlänge (m) flèche (m)	60	2.6 – 26.47	5.2	4.34	3.7	3.2	2.8	2.47	2.2
	55	2.6 – 32.35	6.0	5.48	4.7	4.09	3.6	3.2	
	50	2.6 – 35.29	6.0	6.0	5.2	4.53	4.0		
	45	2.6 – 37.06	6.0	6.0	5.5	4.8			
	40	2.6 – 38.24	6.0	6.0	5.7				
	35	2.6 – 35.00	6.0	6.0					
	30	2.9 – 30.00	6.0						
									Tragfähigkeit (t) force de levage (t)

Motor (kW) 45 m/min. 1.6-35/63/100	Motor (kW) 6 m/min. 20/40/80	Motor (kW) 2 x 5.7 r.p.m. 0.75
---------------------------------------	---------------------------------	-----------------------------------



Kaufmann Kranservice GmbH
 Rütisbergstrasse 8
 8156 Oberhasli
 Tel. 043 411 08 30
 Fax 043 411 08 31
 info@krankaufmann.ch
 www.turmkrane.ch