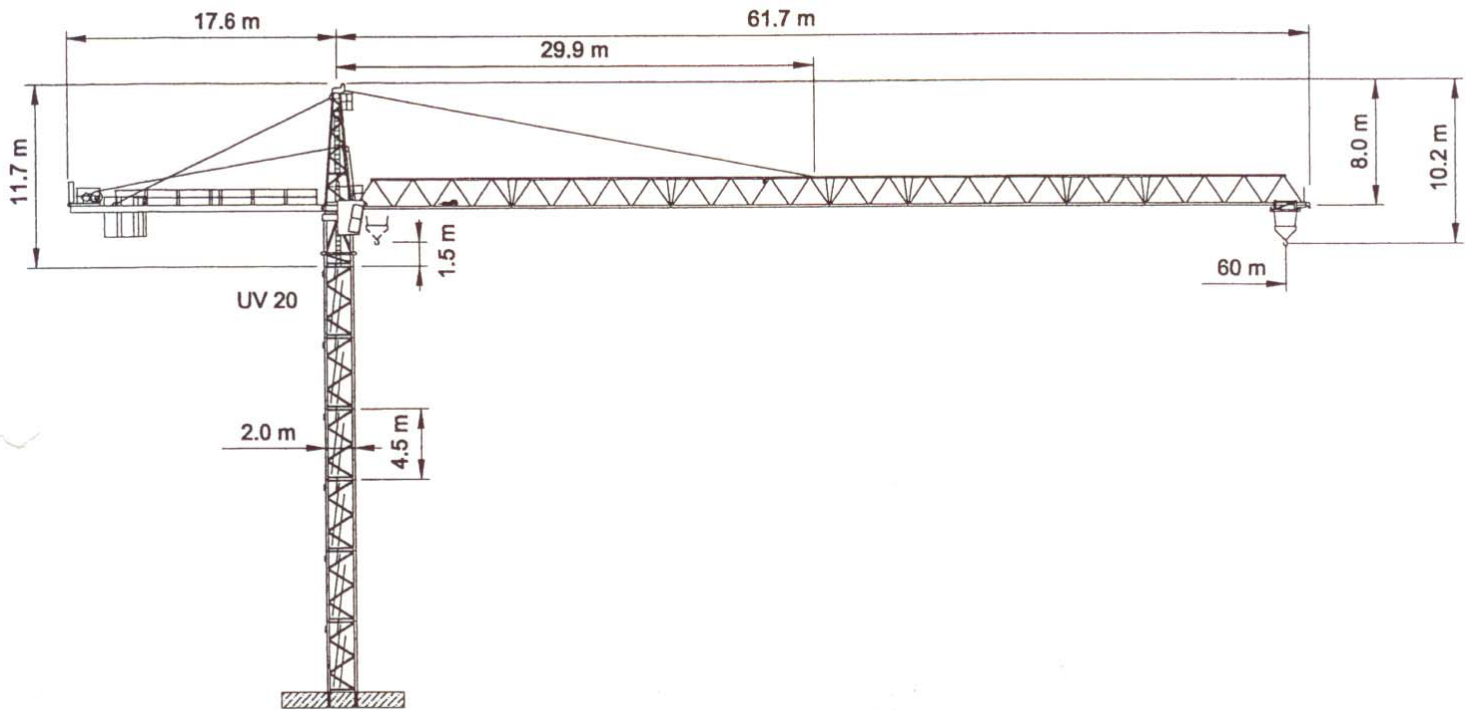





WOLFF WK 192 FL B



Anschluss / câble d'alimentation: 4 x 35[□]
 Absicherung / fusible: 80 A
 Anlaufstrom / courant de pointe maxi: 105 A

Ausladung / portée (m)			30	35	40	45	50	55	60	
Auslegerlänge (m) flèche (m)	60	2.6 – 26.47	5.2	4.34	3.7	3.2	2.8	2.47	2.2	Tragfähigkeit (t) force de levage (t)
	55	2.6 – 33.16	6.0	5.64	4.83	4.21	3.71	3.3		
	50	2.6 – 37.5	6.0	6.0	5.57	4.86	4.3			
	45	2.6 – 39.37	6.0	6.0	5.89	5.15				
	40	2.6 – 39.41	6.0	6.0	5.9					
	35	2.6 – 35.00	6.0	6.0						
	30	2.9 – 30.00	6.0							

 Motor FU (kW) m/min. 45 1 - 100	 Motor (kW) m/min. 6 20/40/80	 Motor (kW) r.p.m. 2 x 5.7 0.75
---	--	--



Kaufmann Kranservice GmbH
 Rütisbergstrasse 8
 8156 Oberhasli
 Tel. 043 411 08 30
 Fax 043 411 08 31
 info@krankaufmann.ch
 www.turmkrane.ch