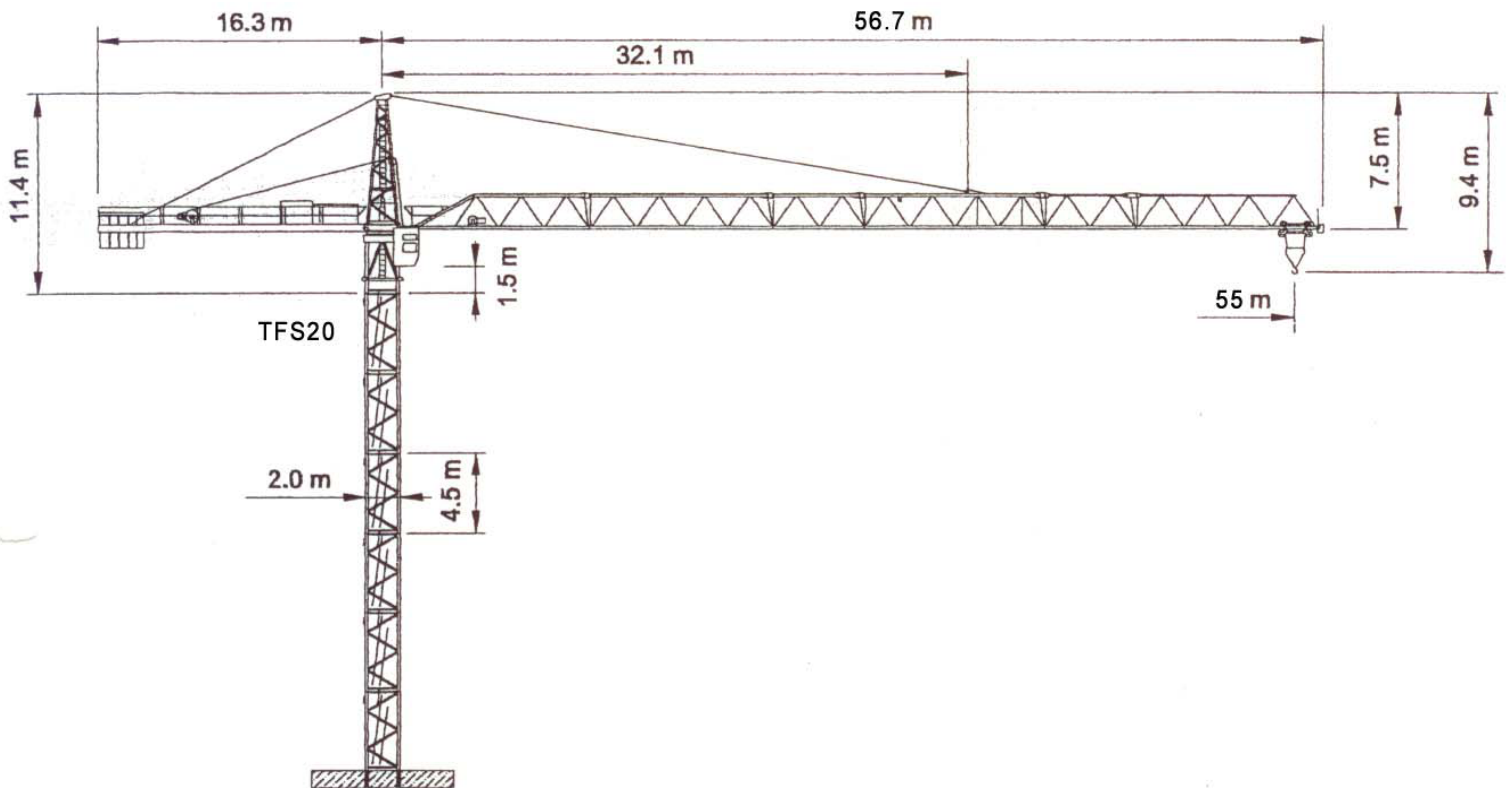






WOLFF WK 160 FL



Anschluss / câble d'alimentation: 4 x 35[□]
 Absicherung / fusible: 80 A
 Anlaufstrom / courant de pointe maxi: 98 A

Ausladung / portée (m)		25	30	35	40	45	50	55		
Auslegerlänge (m) flèche (m)	55	2.45 – 18.4	7.15	5.85	4.9	4.2	3.65	3.2	2.85	 10.0 Tragfähigkeit (t) force de levage (t)
	50	2.45 – 19.8	7.8	6.35	5.35	4.55	3.95	3.5		
	45	2.45 – 19.8	7.8	6.35	5.35	4.6	4.0			
	40	2.45 – 19.9	7.8	6.35	5.35	4.6				
	30	2.45 – 20.0	7.85	6.4						

 Motor FU (kW) m/min.	45 1 - 100	 Motor FU (kW) m/min.	7.5 1-85	 Motor (kW) r.p.m.	2 x 5.7 0.7
---	---------------	---	-------------	--	----------------



Kaufmann Kranservice GmbH
 Rütisbergstrasse 8
 8156 Oberhasli
 Tel. 043 411 08 30
 Fax 043 411 08 31
 info@krankaufmann.ch
 www.turmkrane.ch