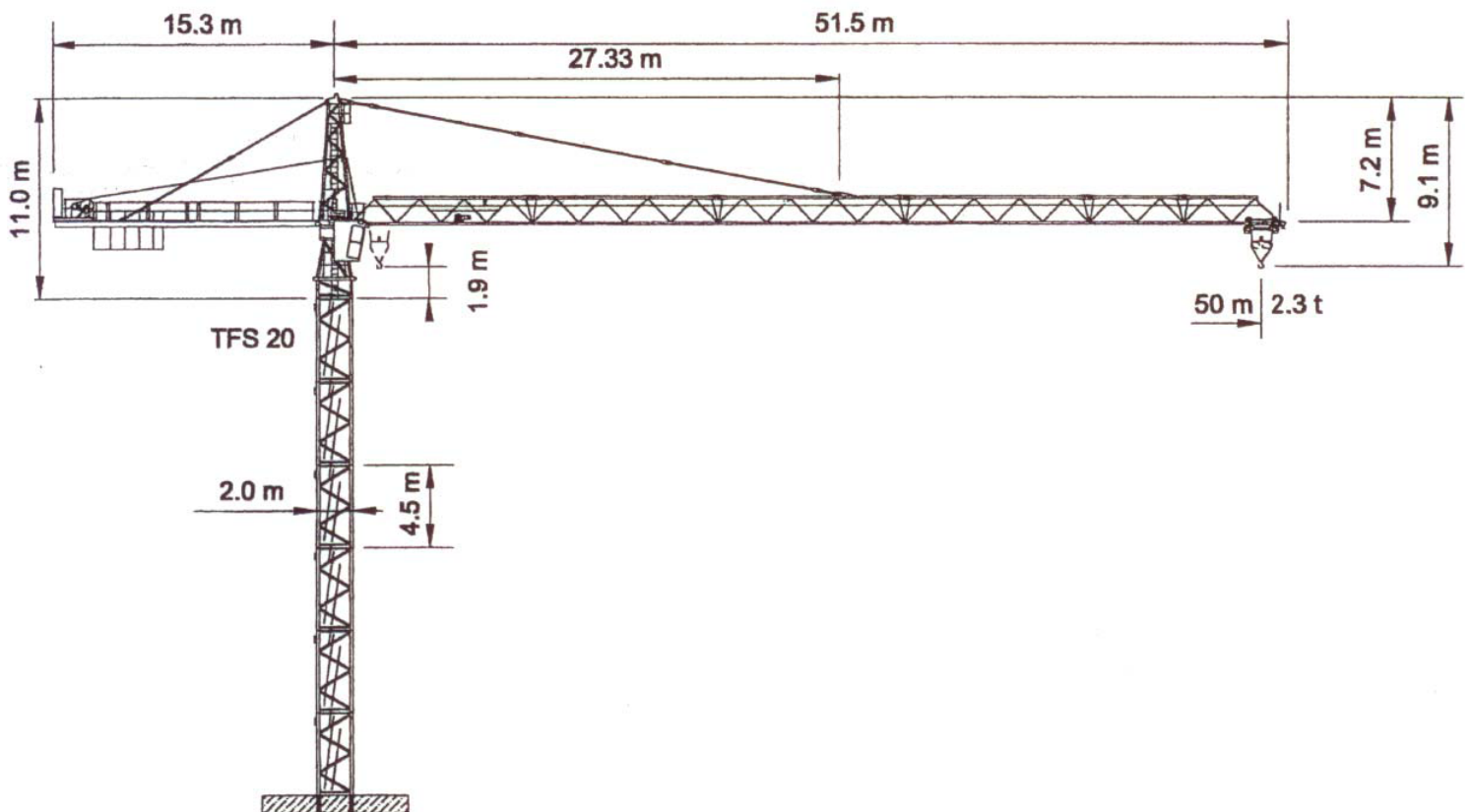






WOLFF WK 122 SL-2/B



Anschluss / câble d'alimentation: 4 x 35[□]
 Absicherung / fusible: 100 A
 Anlaufstrom / courant de pointe maxi: 160 A

Ausladung / portée (m)		30	35	40	45	50	
Auslegerlänge (m) flèche (m)	50	2.6 – 31.1	4.0	3.5	3.0	2.6	2.3
	45	2.6 – 32.0	4.0	3.6	3.1	2.7	
	40	2.6 – 33.8	4.0	3.8	3.3		
	35	2.6 – 35.0	4.0	4.0			
	30	2.6 – 30.0	4.0				
				4.0			Tragfähigkeit (t) force de levage (t)

 Motor (kW) m/min. 45 2.8-53/95/147	 Motor (kW) m/min. 3.9 20/40/80	 Motor (kW) r.p.m. 2 x 4 0.85
--	--	--